

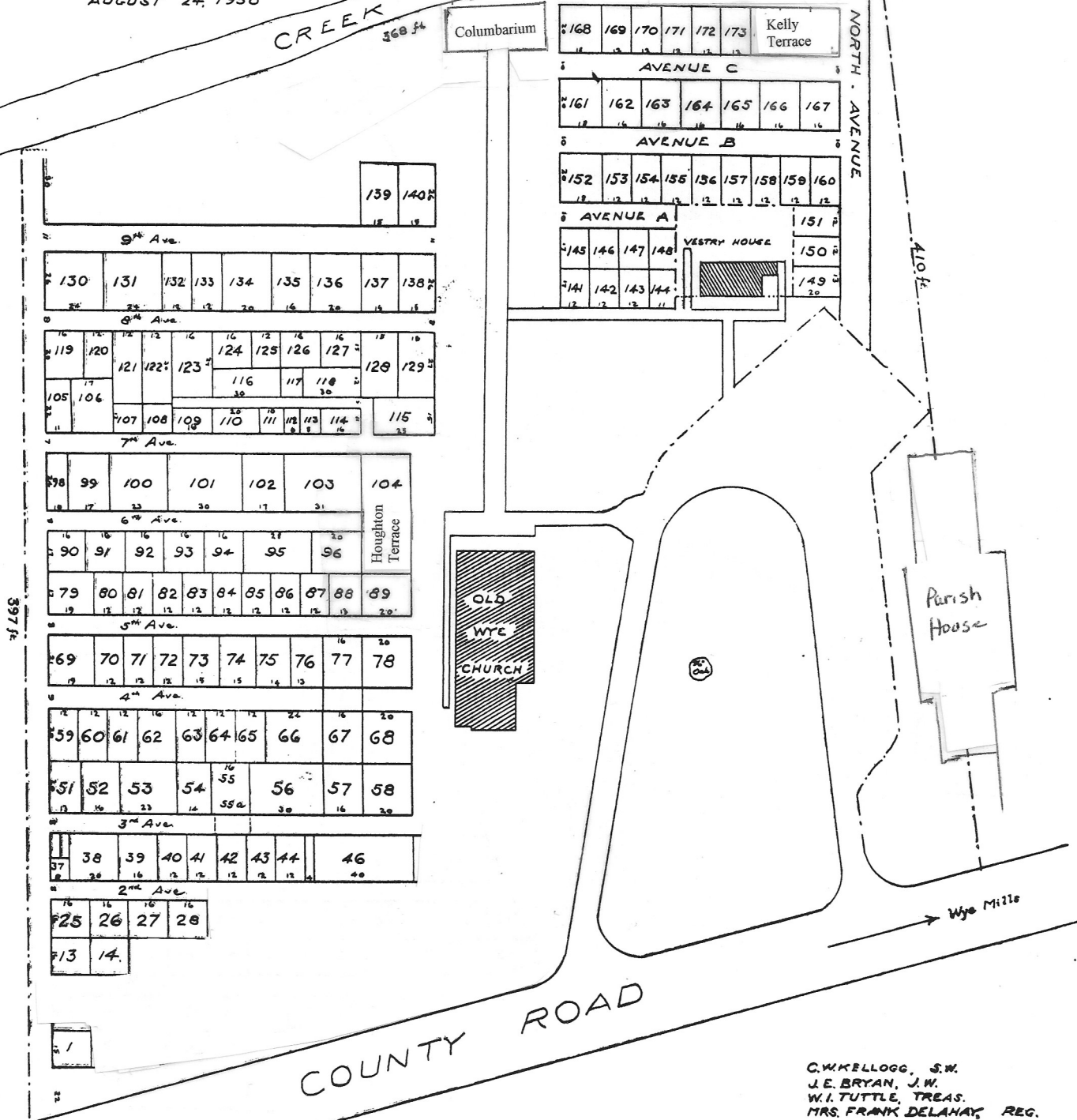
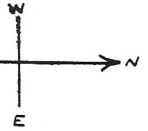
PLAN OF OLD WYE CHURCH CEMETERY

AS ACCEPTED BY

THE VESTRY OF WYE PARISH

AUGUST 24, 1950

CREEK BED
368 ft



SCALE: 1" = 30'

C.W. KELLOGG, S.W.
J.E. BRYAN, J.W.
W.I. TUTTLE, TREAS.
MRS. FRANK DELAHAY, REG.
C.F. CROWDER
ALBERT GREAVES
CARL L'ORANGE
ARTHUR SOUTHDON
THOMAS DONALDSON,
ACTING RECTOR

RECORDED AT THE COURTHOUSE OF TALBOT COUNTY, EASTON, MARYLAND, SEP 26 1950